

INDIA





About us

Welcome to SHREEMARUTI INSTRUMENTS PVT. LTD.

We are pleased to introduce ourselves as India's leading manufacturer of Process instruments like Valves and Manifolds, impulse tube fittings, Pressure Gauges, DPGs, Seal Diaphragm Gauges, Pressure Switch, Syphon Tubes Temperature Gauges, All types of RTDs & Thermocouples, Thermo-wells, Level Gauges and Accessories. SMIPL has the privilege having ISO 9001-2015, ISO 14001-2015, OHSAS 18001-2007, CE MARKING, PED 2014/68/EU SEP, NSIC, MSME, and Startup India certification SMIPL has a fully-integrated manufacturing 5000 sqmtr set up in the south of Gujarat, INDIA being an export house, our skilled and dedicated employees can put into use directly, it provides one stop solution for all instrumentation product hub of our state-of-art Equipment operates to extremely close tolerances, delivering results that often surpass the required standards. Backed by extensive quality and health & safety management. Systems, SMIPL few Valuable Customer are EIL, BHEL, MRPL, NPCIL L&T, Tata Project, Kirloskar, Toshiba, ONGC, Thermax, Forb marshal, Neeppo, GACL, Toshniwal & many more

Following are major segments that we are focusing:

- Oil & Gas [Off Shore and On Shore Operation :Pharmaceutical: Ship Building and Rig Fabrication
- Petrochemical & Fertilisers:Chemicals:PaintsHydraulics & Pneumatics: Cement & steel plant
- Our services Include:
- Project Segment – Electrical & Instrumentation projects(Supply & Installation Services)
- Manufacturing – Customised manufacturing in Valve Mounted SKID's, Level Chambers, Control Panels & Equipment's.
- Total Valve Solutions – we are work Representing reputed International valve companies exclusively in India.
- If there is additional information you would like to have regarding our services,
- We are providing our services to broad range of the customer spectrum

MANUFACTURING & TESTING FACILITIES & CERTIFICATIONS

Our manufacturing facilities are well equipped by modern state of the art manufacturing facilities products meeting customer need. The quality assurance and inspection standards adopted by us are as equivalent as to the international standard, and all products moving out of our unit bear a stamp of high degree of quality and reliability. To satisfy customer rigorous & ever increasing quality requirements we have in house facility for special test – Pneumatic test, Hydro static test, Seat leakage test.

TYPE TEST APPROVALS

Test Report as per ASTM f1387 - 99 by Bureau Veritas India. MSS-SP 99 Type Test for Instrument Valves & Manifolds by Bureau Veritas India. Helium Leak Test Tube Fittings & Instrumentation Valves Approved by Bureau Veritas India. CE Marking for Tube Fittings & Instrumentation Valves Pressure Leak Test Report 1/4" Fittings @ 24000 psi. PED for Tube Fittings & Instrumentation Valves. Computerised Test banch Maximum Pressure 50000 psi. for special test – Pneumatic test, Hydro static test, Seat leakage test. Hardness tester is used to check to the surface hardness of material with the help of Rockwell & Vicrse. Corrosion testing To find out the susceptibility of the material to integranular corrosion attack or to measure rate of corrosion, IGC test is conducted as the code/ standard practice A, B, C, or E in our fully-equipped in house laboratory. Hydrostatic Test Bench upto 40,000 PSI. Pneumatic Test Bench upto 1400 PSI. Impulse Test Bench 0 - 7500 PSI. Ultrasonic test as per ASME Sec V article 4. Dye Penetrate Test as per ASME Sec V article 6. High Temperature. Furnace upto 320° C. Vibration Test, Rotary Flexure, Vaccum Test, Thermal Cycling, Salt Spray Test, Flexure Fatigue Test

CHEMICAL, PMI, RADIOGRAPHY & IBR TESTING

As per the code/standard requirment, chemical analysis is carried out source Agencies.

DESIGN & ENGINEERING

With an unrivalled blend of proven expertise, innovative design technology and skilled engineering, SMIPL has been leading the way in the severe service valves market for more than 30 years. The valves are designed to accuracy and perfection using the advanced versions of software.

Mission

Our mission is to provide cost - effective solutions to our customers by eco-friendly methods emerging with advance techniques that maximize overall system effectiveness through our unique and proven advanced technology.

Certification



Industries We Serve



CHEMICAL INDUSTRIES



OIL & GAS INDUSTRIES



PROCESS INSTRUMENTATION



SHIPBUILDING



POWER GENERATION



FOOD AND BEVERAGE INDUSTRY

DOUBLE BLOCK & BLEED, MONOFLANGE

SMIPL Double block & bleed and Monoflange valve reduce costs of installation and allow fewer potential paths for leakage compared to traditional valve installations. Double block and bleed valve complete the work that would normally require three separate valves — one drain and two isolation — which means that less space is required for them. Some other advantages of installing double block and bleed valve are:

Reduced bolting and gasket

Reduced system vibrations

Supporting brackets aren't required

Design becomes more compact

Increased system reliability

Improved personnel and plant safety

Compact ball valve/needle valve and OS&Y assembly in one DBB.

Working pressure up to 10,000 Psig (690 Bar).

Every valve is subject to a pressure test in accordance with the standard API 598 or BS 6755 part 1.

NPT Threaded connection to ANSI/ASME B1.20.1.

Pressure rating as per ASME B16.34 Class 150 thru 2500.

Anti-Static device is set between the stem and ball.

Fire tested as per BS6755 part 2 / API 607.

Wetted components of sour gas service valve are selected as per requirements of NACE MR01-75/ISO 15156.

Flange construction as per the requirement of ASME B16.5. Flange connections comply with EN 1092-1 are also available upon request.

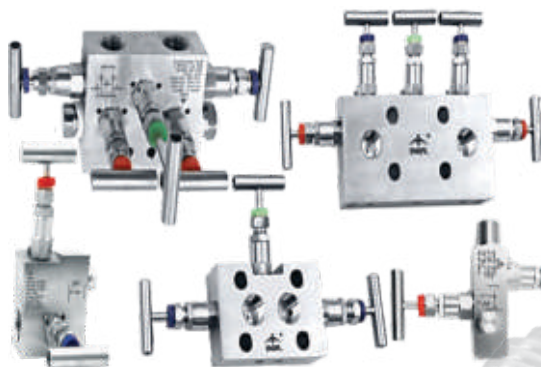


MANIFOLD VALVE

Forged Construction SMIPL's valve manifolds are designed & built to operate safely and reliably at pressure up to 6000 Psi at maximum high temperature up to 240°C. 2 way, 3 way and 5 way valve manifold are used for bubble tight shut off and low torque operation. SMIPL valve manifolds are designed to protect life for the sophisticated and costly instruments like differential and transmitters.

Pressure: 6000 psi to 10,000 psi Temperature : PTFE packing from -73c to 210 c
Port size: 1/4" to 2"

Material: SS 304, 304L, 316, 316L, Monel, Brass, Hastelloy.



NEEDLE VALVE & MULTI PORT VALVES

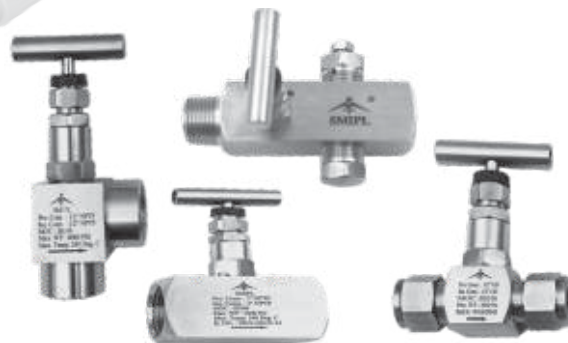
SMIPL's Needle valve & multi port valve are made with Forged or bar stock body. The needle valves with hard seat are designed for use on applications requiring complete isolation or throttling of the media. Multi port gauge valve are ideal for use on gauge or instrument installations without further penetrations of the main piping.

Pressure: 6000 psi to 10,000 psi

Temperature: PTFE packing from -73c to 210 c

Port size: 1/4" to 2"

Material: SS304, 304L, 316, 316L, Monel, Brass, Hastelloy



INSTRUMENT CHECK VALVE

SMIPL poppet or ball check valves are available in stainless steel and are rated up to 10,000 psi. Our check valves ensure one-way directional flow, preventing back-flow during normal system operation or maintenance. SMIPL check valves are used in systems where back-flow can be detrimental to system safety and performance, eliminating system contamination and reducing the risk of mixing.



INSTRUMENT BALL VALVE

Two way, Three Way, Panel mounting Manufactured in various material construction like SS 304, SS 316, SS 316L etc. Ball valve are manufactured in 2 and 3 pieces design & with various end connection.

Pressure : 2000 psi to 6000 psi

Seat: PTFE, GFT, PEEK, POM

Size: 1/4" to 2"



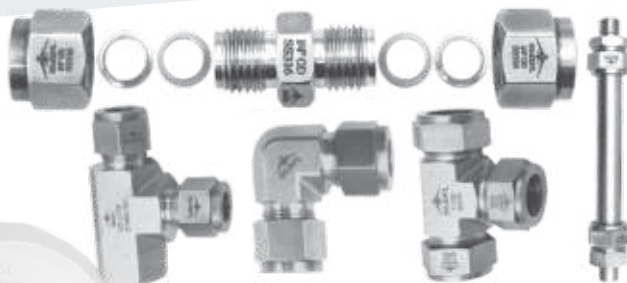
COMPRESSION TUBE FITTINGS

SMIPL offers instrumentation Tube Fittings in different variety of material like Brass, SS 304, SS 316, SS 316L and SMIPL Double Ferrule Tube Fittings are used for leak proof, torque free seal in different adverse condition and rigorous operating environment.

Size : 1/8" to 2" NPT / BSPT threaded

Standard : ASTM F1387, JIS B 2351, BS 4368

Products : Male Connector, Female connector, Union, Union Tee, Bulkhead Union, Male elbow, Female Elbow, Female Run Tee, Front ferrule, Back Ferrule, Nut.



FORGED FITTING

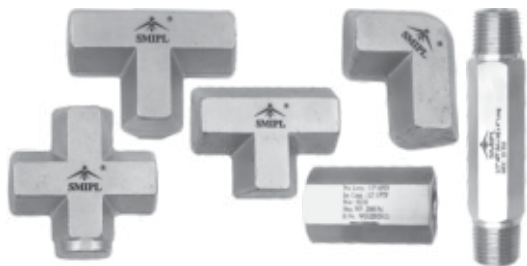
Threaded and Weld Series : Tee, Elbow, Cross, Union, Half Coupling, Coupling, Cap, Bushing, Hex Head Plug, hex Nipple, Reducer.

Pressure :

Thread End – 2000 – 3000- 6000 LBS, and Welded End – 3000 – 6000 – 9000 LBS

Standard: ASME B16.11 , ASME B16.9, MSS – SP – 79, 83, 95, 97

Material : ASTM A105 (Carbon Steel), ASTM A182 (SS 304L, SS316L)



PRESSURE GAUGE

Industrial Gauges, Process Gauges, Differential Gauges, Temperature Gauges, Our range of Industrial gauges are available in dial size of 63 mm and 100 mm with either Stainless Steel or Brass wetted parts and cover ranges from vacuum upto 1600 bar. Accuracy ranges from 1.6% to 1.0% F.S.

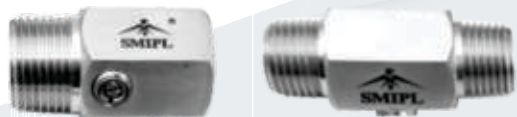


GAUGE COCK

Provides an economical 2 & 3 way Round body to shut off the flow of air to the pressure instrument, thereby allowing the instruments to be isolated from the pressure media or removed from services.

GAUGE SAVER (OVER LOAD PROTECTOR)

Nominal Pressure Up To 400kg/Cm², 7 Different Adjustable Ranges, Over Pressure Up to 600 Kg/Cm², Below/Diaphragm & Piston Type Model Available



SNUBBER (PULSATION DAMPENER)

Adjustable type Designed to reduce dampening effect of process fluid, Working pressure up to 400kg/cm², Working temperature up to 120°C, All stainless steel construction, For corrosive media & environment

SIPHON

All Stainless Steel Pigtail, Coil and 'U' type shapes, Max. Temperature Up to 400°C, Nominal pressure up to 160kg/cm², TIG welded and Hydro Tested made with seamless Pipe.



LEVEL GAUGES

Level Gauges Is Fitted with Two End Block through Gland Packing. The Gauge Is Mounted Parallel to Tank So as Form a Close Loop Causing Tank Liquid to Seek Its Level in Gauge. Gauges Are Provided In The Form Of Tied Rods/C-Channel Around The Gauges To Protect It From Accidental Blows. End Blocks Have Built insulating Valve, Drain Valve and Vent Plug. 360° Visibilities with Tie Rod Design. Offset Isolating Valves Permit Glass Removal /Replacement.



RTD AND TEMPERATURE GAUGE

RTD's are temperature measuring sensors which use the resistance /temperature relationship of material to measure the temperature of a body. RTDs have higher accuracy and stability as compared to Thermocouples usually in the below 600°C range. Resistance temperature sensors are composed of realizing material generally Copper, Nickel, or platinum, which shows resistance at a specific temperature. If we want to measure temperature with high accuracy, an RTD is an ideal solution, as it has good linear characteristics over a wide range of temperatures.



COOLING TOWER

Stainless Steel Construction, Suitable For Clean Air, Gases And Non Crystallized Liquid

DIAPHRAGM SEALS

Prevent your pressure gauges, switches and transmitters from clogging or corrosion, Reduce fugitive emissions, extend the service life of the pressure instrument, which reduces process downtimes, reduce or eliminate maintenance costs.



PRESSURE SWITCH

DIFFERENTIAL PRESSURE SWITCH (WEATHER PROOF) DIAPHRAGM TYPE

High Accuracy, SS Wetted Parts, Set Point Lacking, Highly Reliable, Diaphragm Seal (Optional), Filter Monitoring, Boiler, Furnace, Railway Engine, Oil and Gas, Conventional and Nuclear Power Plant, Marine Industries etc.

DIFFERENTIAL PRESSURE SWITCH (FLAME PROOF) DIAPHRAGM TYPE AGM SEALS

Fix/Adjustable Differential, Field Adjustable Set Point, Flameproof To Gas Groups, Ingress Protection IP 67, Rigid Construction, Scale Provided, Marine Application, Textile Machineries, Power And Steel Plants, Oil And Gas Refineries, Petro Chemical And Fertilizers, Cement And Glass Industries, Railway Engine and Turbines

INDUSTRIAL VALVE

SMIPL offers various types of Industrial valves such as Gate Valves, Globe Valves, Ball Valves, Butterfly Valves, Check Valves and Diaphragm Valves etc. Industrial valves are devices that are used to regulate liquids, gases, and slurries. The flow of liquids or gases can be controlled using these valves. This can be done through pipes and other passageways by opening, closing, and partially obstructing the passageway or pipe. SMIPL valves are exceptionally sturdy, rugged and durable, with a reputation for quality, integrity and long service.

Some other features are.

- Precision Finish Seat & Surface
- Fire Safe Design
- Easy Replacement



PHARMA & DAIRY VALVES & FITTINGS

Stainless Steel Dairy Plug Valves 3 Way, Stainless Steel Dairy Plug Valves 2 Way, Stainless Steel Dairy Plug Valves Tanker End, Stainless Steel Dairy Butterfly Valves 3 Way, Stainless Steel Dairy Butterfly Valve 2 Way, Stainless Steel Dairy Butterfly Valve Tanker End, Stainless Steel Diaphragm Valve SMS End, Stainless Steel Diaphragm Valve TC End, Stainless Steel Non Return Valve SMS End, Stainless Steel Non Return Valve TC End, Stainless Steel Butterfly Valve TC End, Stainless Steel Zero Dead Leg Valve

THERMOWELL



Bar stock Threaded, Design as per PTC 19.3, These Thermowells are manufactured from solid bar stock and installed into the process with the help of threaded process connection. This design is suitable for all type of RTD's, Thermocouples, mechanical as well as digital Temperature Gauges. Available in various shapes like Straight, Straight with reduced tip, partial taper & full taper

AIR HEADER



SMIPL can provide special coating like Zing coating, Hot dipped galvanizing, Epoxy, Silver Coat etc. on Carbon Steel Air headers & Electro Polish finished for stainless steel. All Headers are Laser Marked, wherever possible. Air headers and distribution manifolds provide customers with many configurations for isolation manifolds. SMIPL fabricates manifolds specifically to suit the customer's exact requirements. Manufactured in stainless steel with various end connection and with various NB pipes of Sch 40/80.

CONDENSATE (SEAL) POT



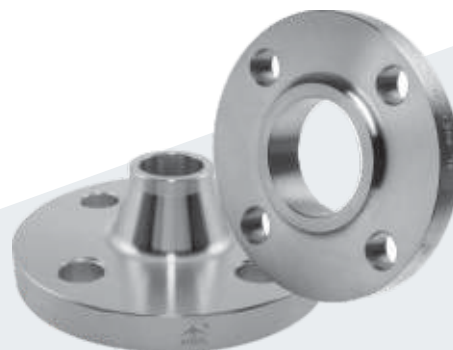
SMIPL provides Electro Polish finished for stainless steel Pots. All Condensate Pot are Laser Marked, wherever possible. EN10204/3.1b Test Certificate will be furnished. Typical industry applications include: Refineries, Power plants, Chemical & Petrochemical, Steel plants and other Process industries. Made in stainless steel and carbon steel with various NB pipes of Sch 40/80/160.

FLUSHING RING



Flushing rings Are simply mounted between the flanged process connection and the diaphragm seal. The two flushing ports allow washing out of particles accumulated in front of the membrane and the pressure space can be vented or drained according to requirement & Coil type.

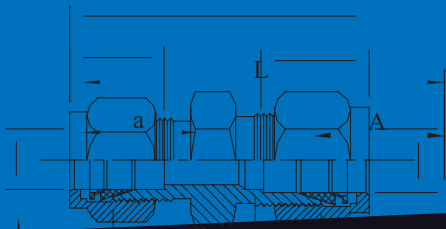
FLANGES



At SMIPL we manufactured all types of flanges as per ANSI standard, DIN standard, BS standard and JIS Standard. Flange material should be SS 304, SS 316, SS 316L, Carbon Steel etc. as per the requirement. Flange type should be Blind flange, slip on flange, welded neck flange etc.

SERVICE & SUPPORTS CUSTOMIZABLE SOLUTIONS THROUGH A DEDICATED PARTNER NETWORK.

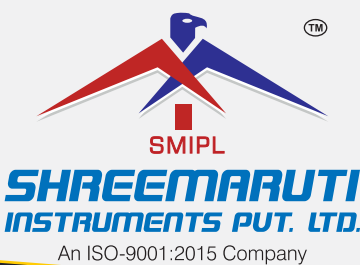
We have our own Cad /Cam department and can thus provide detailed dimensional drawing or views, if required. We normally keep a stock of standard size of fittings & valves, so that urgent requirement can be delivered minimum possible time of placing an order. We have provide Material test certificate as per customer request, Lab or mill certificate, Hydro test certificate & pneumatic test certificate documents. We also give support to carry out customize product if detail information or drawing given by the customer for particular products. We are design owned occupied by professionals who have chosen SMIPL to secure their facilities and installations. That because our partners-the people we entrust with our technologies-unrivalled support and know-how to create custom life-safety solutions that lead the industries and innovation. And they're ready to do the same for you. See what's possible for your business. Contact your SMIPL Partner today.



Our Manufacturing Products Range:

- | | | |
|--|--|---|
| <ol style="list-style-type: none"> 1) All Types of Compression Tube Fitting, Pipe Fitting, High Pressure, Forged Fitting, Precision Pipe Fitting, Swivel Adaptors, Quick Release Couplings 2) TC Clamp 3) All Types of Manifold Valve in 2way, 3way, 5way 4) Ball Valve in 2way, 3way, 5way 5) Thermowell, RTD, Thermocouple 6) Diaphragm Seal & Gauges 7) Pressure Gauge, Temperature Gauge, | <ol style="list-style-type: none"> 8) Level Gauge & Pressure Switches 9) Over Load Protector, Gauge Cock, Siphon, Air Header, Air Manifolds, Air Distributor 10) Pressure Transmeter & Remote Seal 11) Gauge Root Valves & Relief Valve 12) Pressure Regulators 13) Block & Bleed Valves, Mono Flange 14) Needle Valve, Angle Valve, NRV-PRV, Check Valve | <ol style="list-style-type: none"> 15) Condensate Pot, Flushing Ring, Flanges, Cooling Tower, Catch Pots, Seal Pots 16) Pharma Valves & Fittings 17) Hook-Up, Hose Pipe & Hardwares 18) Tubes/Imples Tubes 19) Dairy Fittings-SMS Union-Din Nut, IDF Union 20) All Types of Industrial Valves, Bellowseal Valve, Gate Valve, Globe Valve, Butterfly Valve, Diaphragm Valves, Clover End Valves, Tri Clover End Valves |
|--|--|---|

Our Valuable Client



FACTORY

Royal Industrial Hub, Plot. No.15, Survey No.30+31+2/2/2/NH-48 Highway Road, Opp.(JRF UPL), Village Valvada. VAPI, Tal. Umbergaom Dist.:Valsad, Gujarat - 39619, INDIA

REGD. OFFICE

73/9, 73 Gudge House, 5th Kumbharwada, Near Maruti Mandir, Mumbai - 400 004. INDIA

🌐 www.smiplvapi.com ☎ +91-9825656785

✉ info@smiplvapi.com • rameshpatil@smiplvapi.com

in f @ smiplvapi

